

09650.1
VCT / RUBBER TILE
(CSI: RESILIENT FLOORING)

GENERAL NOTES:

- GC and/or installers shall provide 5-10% attic stock.

All consultants are required to comply with current MHHS Interiors Best Practices, whether new construction or renovation. For continuity, renovation projects shall incorporate the most current design concept and intent. Any deviation requires approval from Tracy Smith Sare, Lead Project Manager, Architecture & Construction, 713.448.4002 or e-mail tracy.smithsare@memorialhermann.org

Product: Vinyl Composition Tile
Manufacturer: Mannington Commercial
Pattern: Essentials
Color: All Colors
Size: 12"x 12"
Gauge: 1/8"
Static Load Limit: 75 psi
ASTM-F-1066: Composition 1, Class 2
Adhesive Type: Mannington V-11
Traffic Type: Commercial

Remarks: Direction of tile is at the discretion of the Consultant.

Alternate: Armstrong (accent tiles only) with approval from Tracy Smith Sare - 713.448.4002

Sample:



Product: Vinyl Composition Tile
Manufacturer: Mannington Commercial
Pattern: SolidPoint
Color: All Colors
Size: 12"x 12"
Gauge: 1/8"
Static Load Limit: 75 psi
ASTM-F-1066: Composition 1, Class 2
Adhesive Type: Mannington V-11
Traffic Type: Commercial

Remarks: Direction of tile is at the discretion of the Consultant.
It is recommended to lay one direction (there are arrows on the back of each tile).

Sample:



Product: Vinyl Composition Tile
Manufacturer: Mannington Commercial
Pattern: Brushwork
Color: All Colors
Size: 12"x 12"
Gauge: 1/8"
Static Load Limit: 75 psi ASTM 770
ASTM-F-1066: Composition 1, Class 2
Adhesive Type: Mannington V-11
Traffic Type: Commercial

Remarks: Direction of tile is at the discretion of the Consultant.

Sample:



Product: Solid Vinyl Tile
Manufacturer: Toli
Pattern: Viale
Color: All colors
Size: 17.7"x 17.7"
Gauge: 1/8"
Static Load ASTM F- 1000psi
Rating: Class 2
Traffic Type: Commercial

Remarks: Direction of tile is at the discretion of the Consultant.

Sample:



Product: Vinyl Composition Tile
Manufacturer: Armstrong
Pattern: Safety Zone
Color: All neutral colors
Size: 12"x 12"
Gauge: 1/8"
Static Load Limit: 125 psi
ASTM-F-1066: Composition 1, Class 2
Traffic Type: Commercial

Remarks: Tile to be installed in one direction.

Typical Application: Limited Applications; for use where slip resistance is needed.

Sample:



Product: Solid Vinyl Tile
Manufacturer: Toli
Pattern/ Style: Lightstone Graniti
Color: All Colors
Size: 17.7"x 17.7"
Gauge: .120"
Rating: Class 3, Type B
Traffic Type: Commercial
Static Load: 1500 psi ASTM 970

Remarks: Directional

Typical Application: Limited Application; for use in public areas only.

Sample:

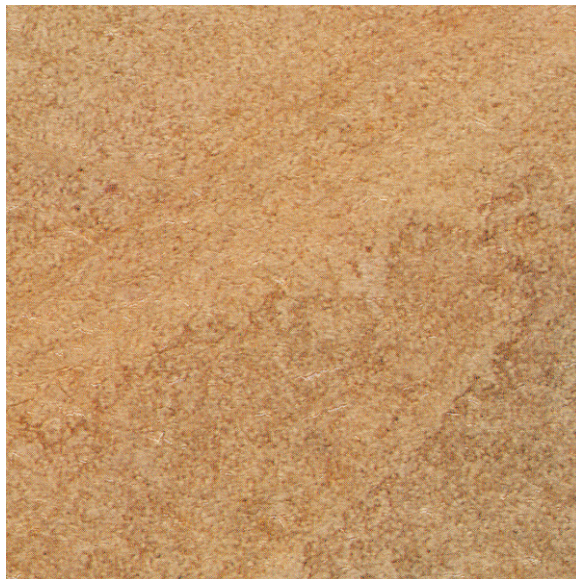


Product: Solid Vinyl Tile
Manufacturer: Toli
Pattern/ Style: Lightstone Rainbow Sand
Color: All Colors
Size: 17.7"x 17.7"
Gauge: .120"
Rating: Class 3, Type B
Traffic Type: Commercial

Remarks: Direction of tile is at the discretion of the Consultant.

Typical Application: Public elevators cabs & public areas only.

Sample:



| | |
|---------------------------|---|
| Product: | Rubber Tile |
| Manufacturer: | Johnsonite |
| Pattern: | Roundel Rubber Tile |
| Surface: | Weathered (WRT) |
| Color: | All colors |
| Size: | 24"x 24" |
| Gauge: | 1/8" |
| Static Load Limit: | 75 psi |
| ASTM-F-1066: | Composition 1, Class 2 |
| Adhesive Type: | Johnsonite 965 Adhesive |
| Traffic Type: | Commercial |
| Remarks: | <ol style="list-style-type: none">1. Product to be used at expansion joints and elevator thresholds ONLY.2. Color must be coordinated with adjacent tile, custom color to match, if necessary.3. See typical detail on following page. |

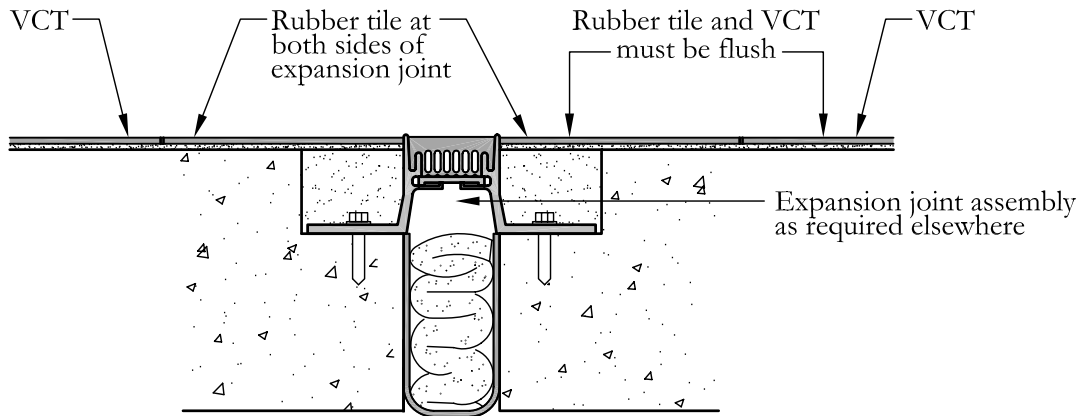
Typical Application: Expansion joints and elevator thresholds.

Sample:



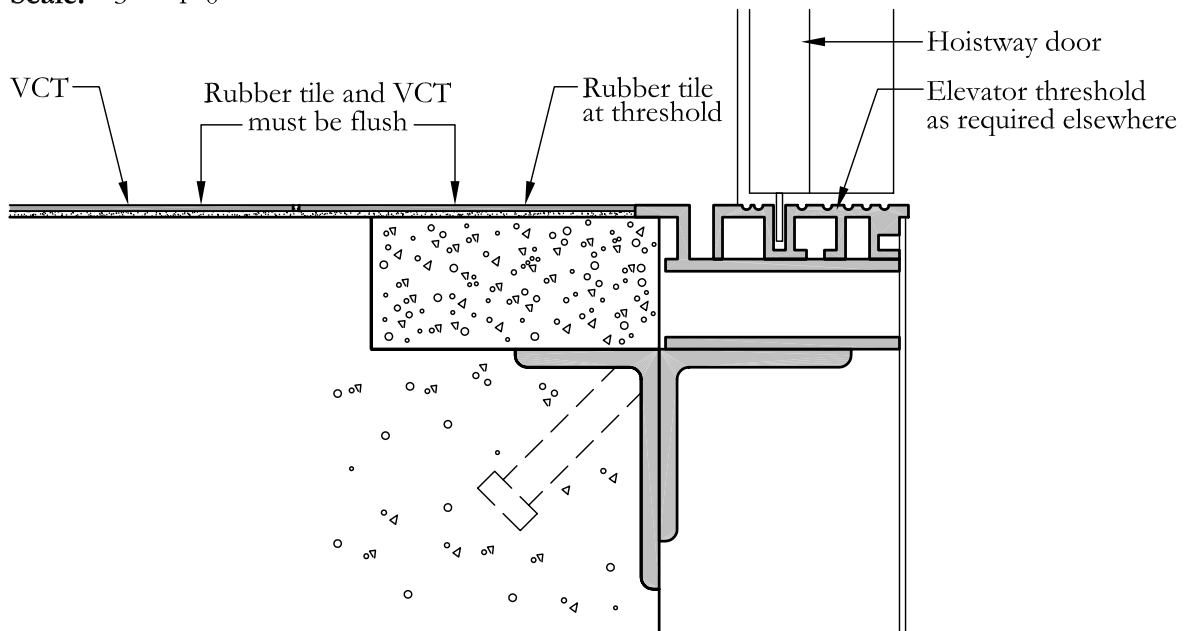
RUBBER TILES AT FLOOR EXPANSION JOINT

Scale: 3" = 1'-0"



RUBBER TILES AT ELEVATOR THRESHOLD

Scale: 3" = 1'-0"

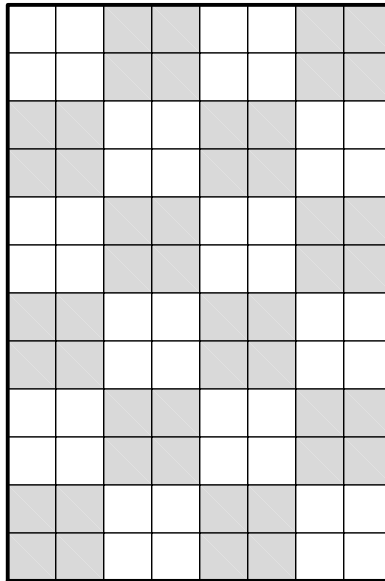


VCT FLOOR PATTERN

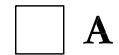
Application: All areas

Reference Locations: MHHS Southeast, MHHS Hermann, MHHS Southwest

Scale: 1/4" = 1'-0"

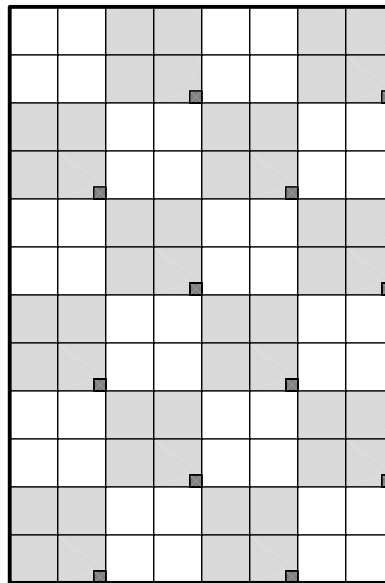


12"x 12" VCT

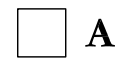


VCT FLOOR PATTERN

Application: All areas
Reference Locations: MHHS Hermann, MHHS Southwest
Scale: 1/4" = 1'-0"
Notes: VCT 'C' is a 3" square. It may be one color or multiple colors.



12"x 12" VCT



A



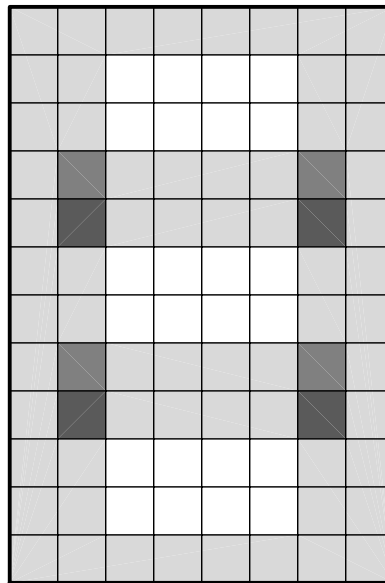
B



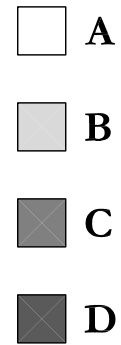
C

VCT FLOOR PATTERN

Application: Corridors
Reference Locations: MHHS Woodlands
Scale: 1/4" = 1'-0"

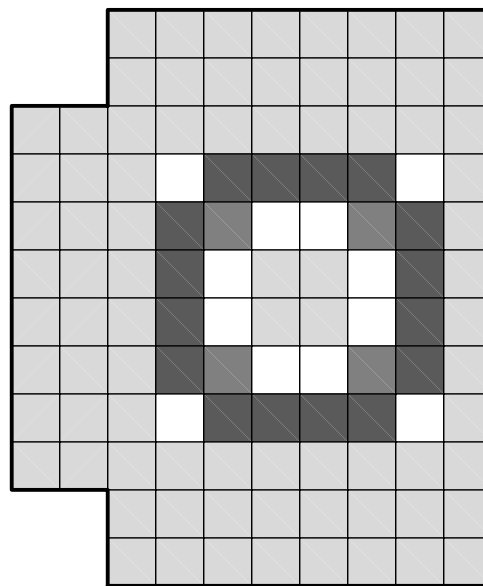


12"x 12" VCT

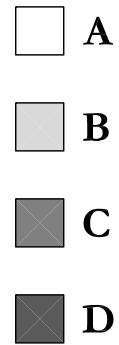


VCT FLOOR PATTERN

Application: Corridor intersections
Reference Locations: MHHS Woodlands
Scale: 1/4" = 1'-0"



12"x 12" VCT



VCT FLOOR PATTERN

Application: Corridors
Reference Locations: MHHS Northwest
Scale: 1/4" = 1'-0"

12"x 12" VCT



A



B



C



D



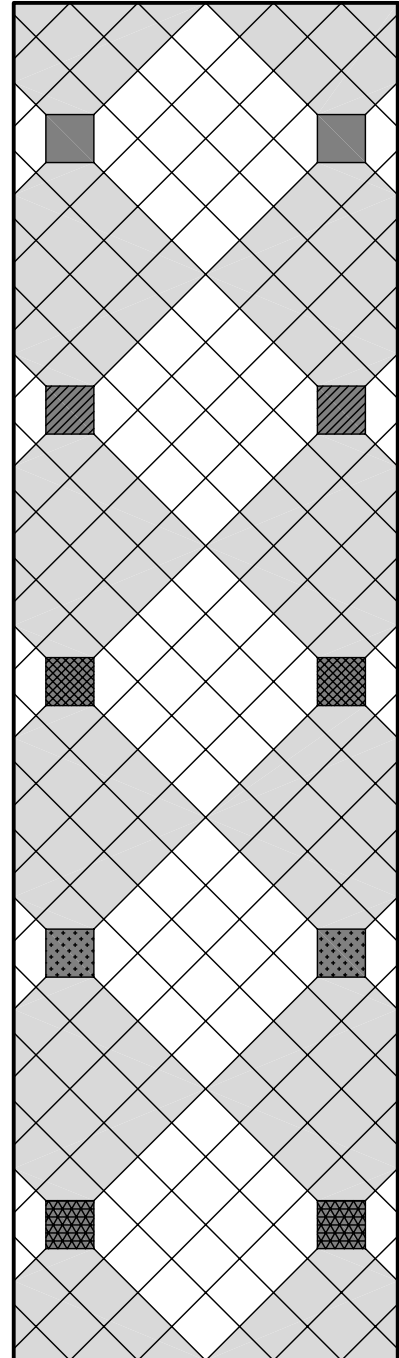
E



F

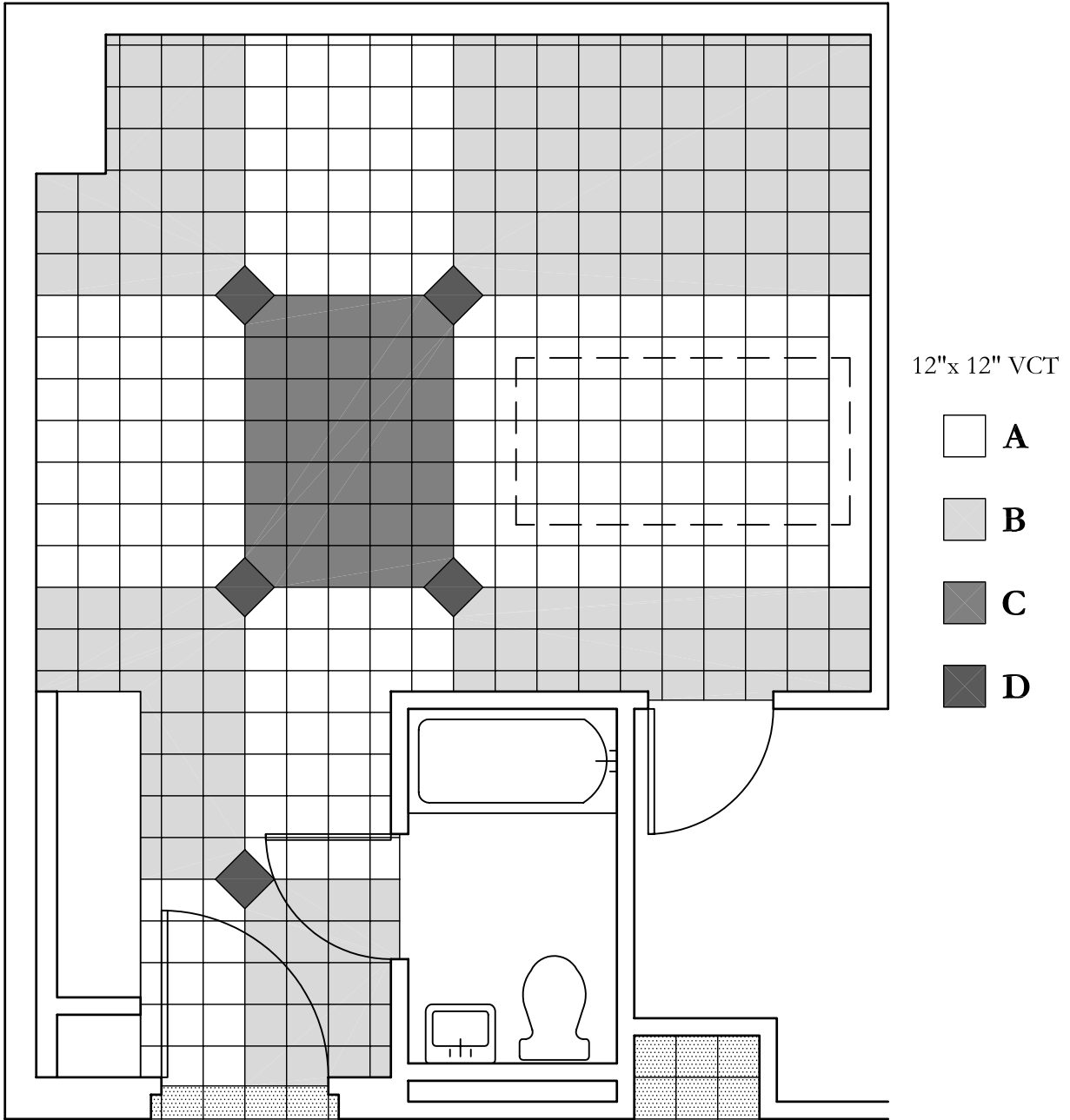


G



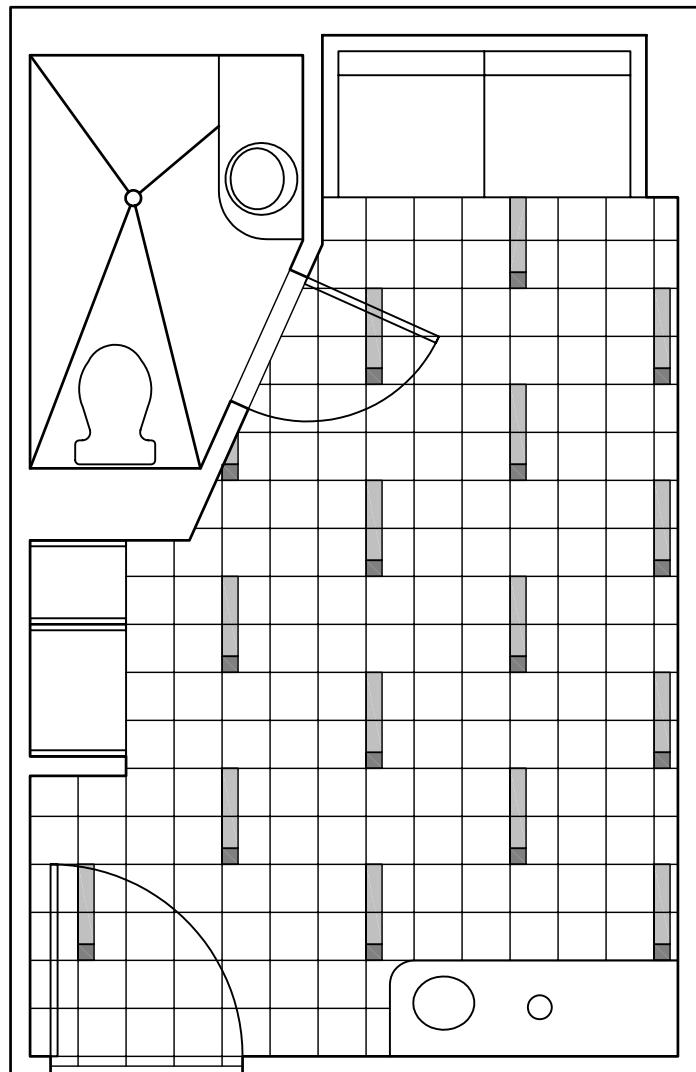
VCT FLOOR PATTERN

Application: Patient rooms
Reference Locations: MHHS Northwest
Scale: 1/4" = 1'-0"



VCT FLOOR PATTERN

Application: Patient rooms
Reference Locations: MHHS Katy
Scale: 1/4" = 1'-0"
Notes: Accent VCT's are cut from a full 12"x 12" tile.
VCT 'C' is a 4" square. VCT 'B' is 4"x 8" and 4"x 12"



12"x 12" VCT

